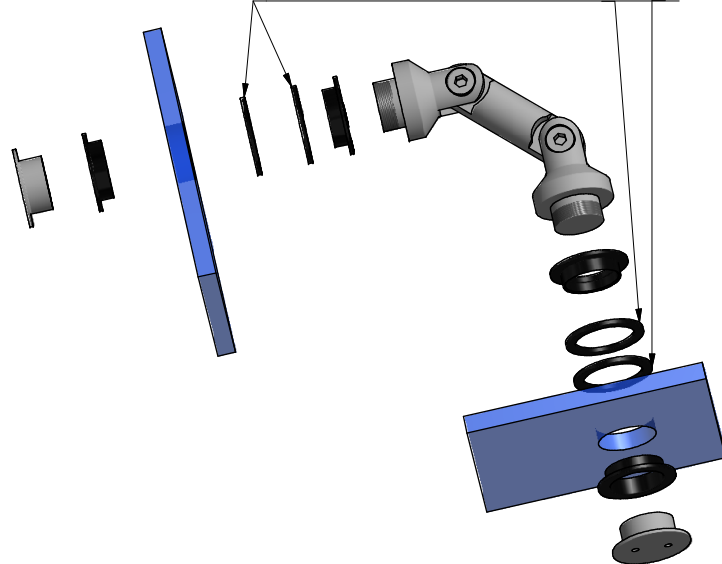
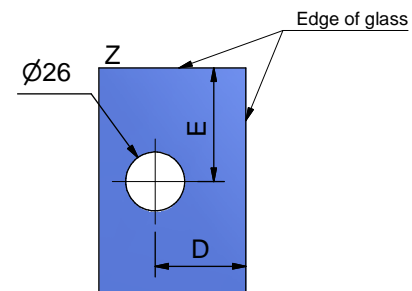
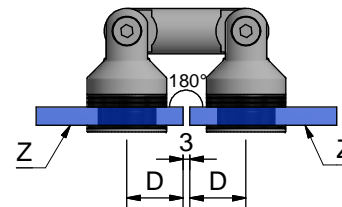


if 8mm glass is used, use both shims
if 10mm glass is used, use one shim
if 12mm glass is used remove both shims

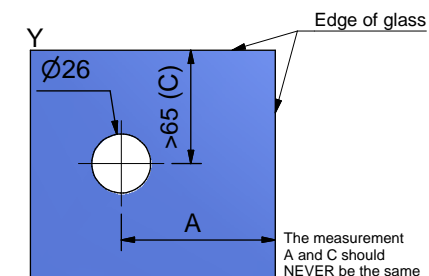
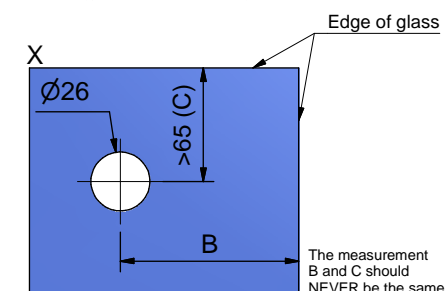
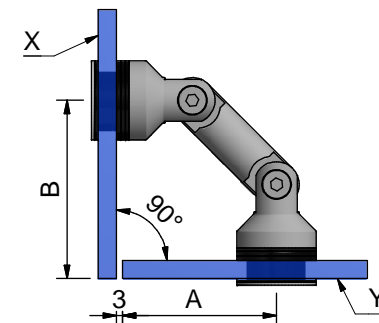
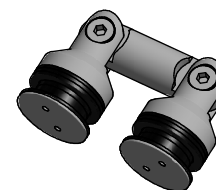


The distance between sets of Point fixings should Not exceed 800mm

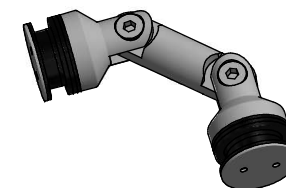
RG-124 is a flexible point fixing that can be mounted in many ways. Roca recommends the ways that is displayed on the drawing



180° Mounting			
	Rod length	Dim	Dim
Item No.	L	D	E
860173	103	50	>65



90° Mounting			
	Rod length	Dim	Dim
Item No.	L	A	B
860170	52,5	68	76
860171	60	73	81
860172	82	89	97
860173	103	104	112



The measurements are based on 8mm glass, if 10mm glass is used subtract 2mm to measurement A, if 12mm glass is used subtract 4mm for measurement A

Point fixing glass-glass

V3 120913/EM

RG-124